

主要参数/Main Specifications

项目 Item	单位 Unit	参数 Parameter
---------	---------	--------------

尺寸参数 Dimension

整机全长 Overall Truck Length	mm	10290
整机全宽 Overall Truck Width	mm	5880
整机全高 Front Canopy Height	mm	5085
总高度 (货箱举升) Body Raised Height	mm	9870
轴距 Wheelbase	mm	4580
轮中心距 Wheel center distance	前轮 Front mm	3800
	后轮 Rear mm	3400

重量参数 Weight

整车总质量 Gross Vehicle Weight (GVW)	kg	158000
额定载重 Payload	kg	91000
空载车重 Empty vehicle weight	kg	67000

质量分布 Weight Distribution

空载 Unload	前桥 Front axle	%	32160 (48%)
	后桥 Rear axle	%	34840 (52%)
满载 Loaded	前桥 Front axle	%	50560(33%)
	后桥 Rear axle	%	107440(67%)

动力参数 Power Train

发动机型号 Engine	/	Cummins QST30
发动机额定功率 Rated power	kW/rpm	783/2100
发动机最大扭矩 Max. torque	N.m/rpm	4630/1300
驱动形式 Drive	/	4 × 2
轮胎 Tire	/	27.00R49
变速箱型号 Transmission	/	Allison H8610 AR
档位 Ratio	/	6前进档1后退档
变矩器型号 Torque	/	TC890 Allison
变矩系数 Ratio	/	1.86
主减速器传动比 Ratio		2.16
轮边减速器传动比 Ratio		13.75

项目 Item	单位 Unit	参数 Parameter
---------	---------	--------------

行驶参数 Driving Performance

最高行驶速度 Max. vehicle speed	km/h	48
最小转弯直径 Min. turning diameter	m	24
最大爬坡度 Max. gradeability	%	30
最小离地间隙 Min. ground clearance	mm	780

工作参数 Working Parameter

装载高度 Loading height	mm	4325
举升时间 Lifting time	s	18
举升角度 Dump angle	°	54

保养容量 Service Capacities

燃油箱 Fuel tank	L	1050
液压油箱 Hydraulic tank	L	700
冷却系统 Cooling system	L	350
机油 Engine oil	L	134
后桥和轮边减速器 Rear axle and Motor gear box	L	120
变速箱 Transmission Oil	L	100

货厢容积 Body

标配2:1堆装 Standard SAE heaped 2:1	m ³	60
---------------------------------	----------------	----

材料和规格可随时间改变，恕不另行通知
Materials and specifications may be changed at any time without prior notice

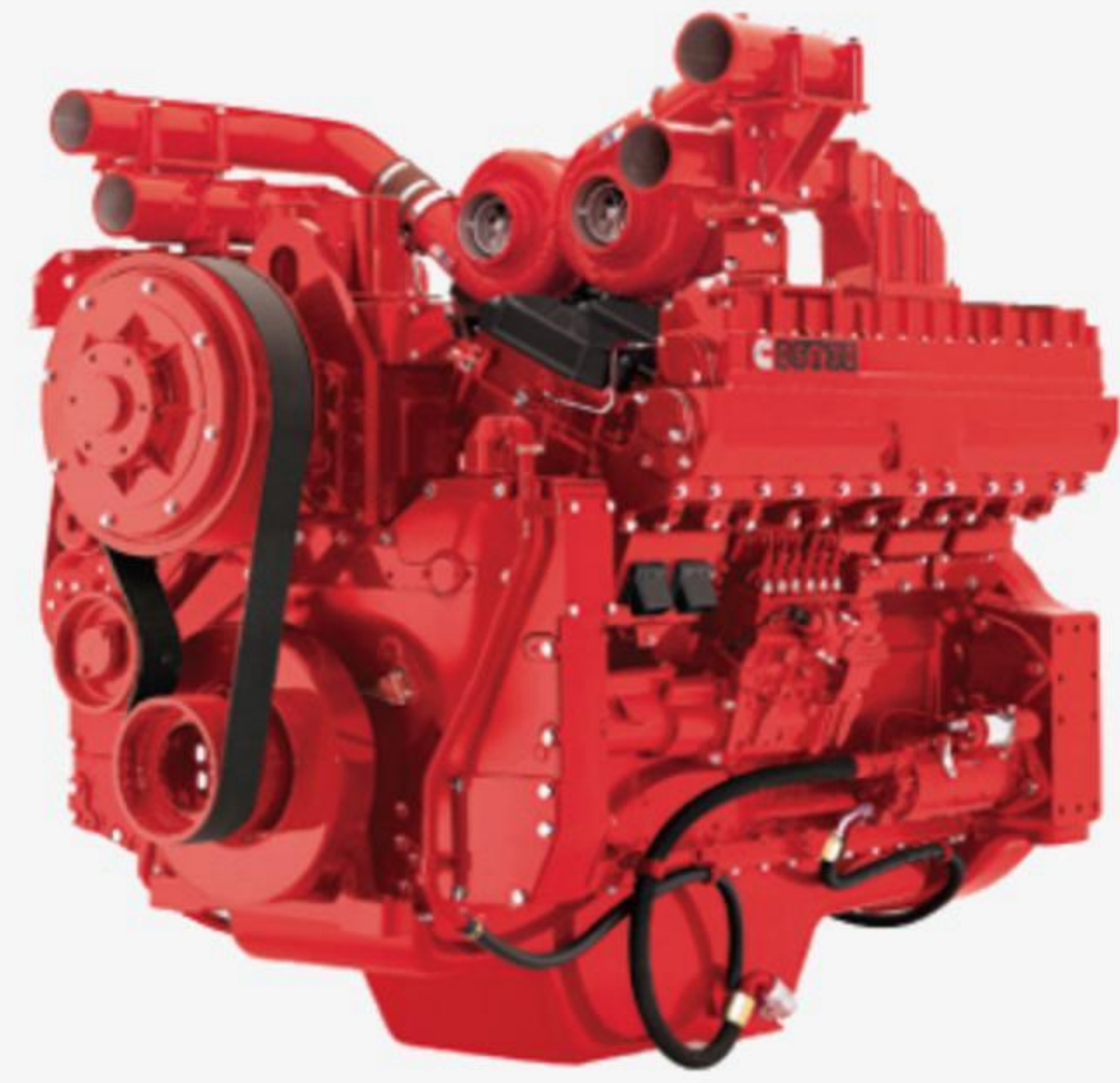
XCMG
徐工徐工 助您成功
XCMG FOR YOUR SUCCESS

XDR100 双桥刚性矿车
XDR100 DOUBLE AXLE RIGID DUMP TRUCK



- 额定载重 Payload (kg): 91000
- 额定功率 Rated Power (kW/rpm): 783/2100
- 最大爬坡度 Max Gradeability (%): 30

高生产率 HIGH PRODUCTIVITY



● 高性能发动机 High Performance Engine

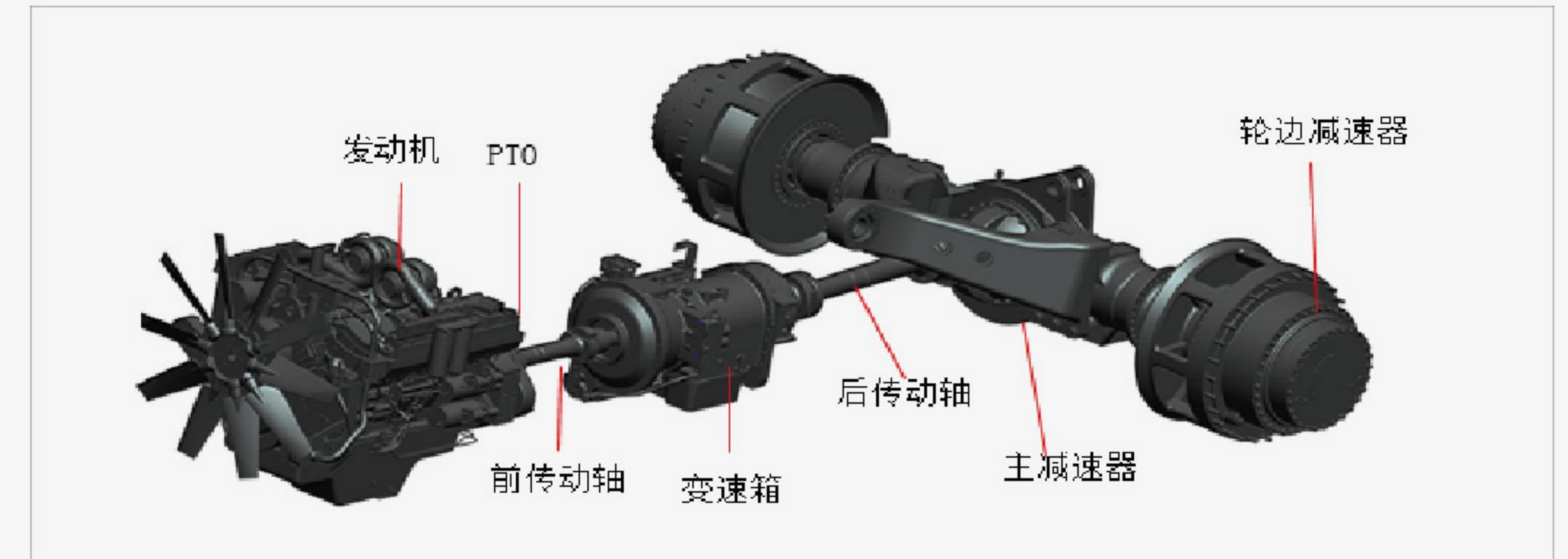
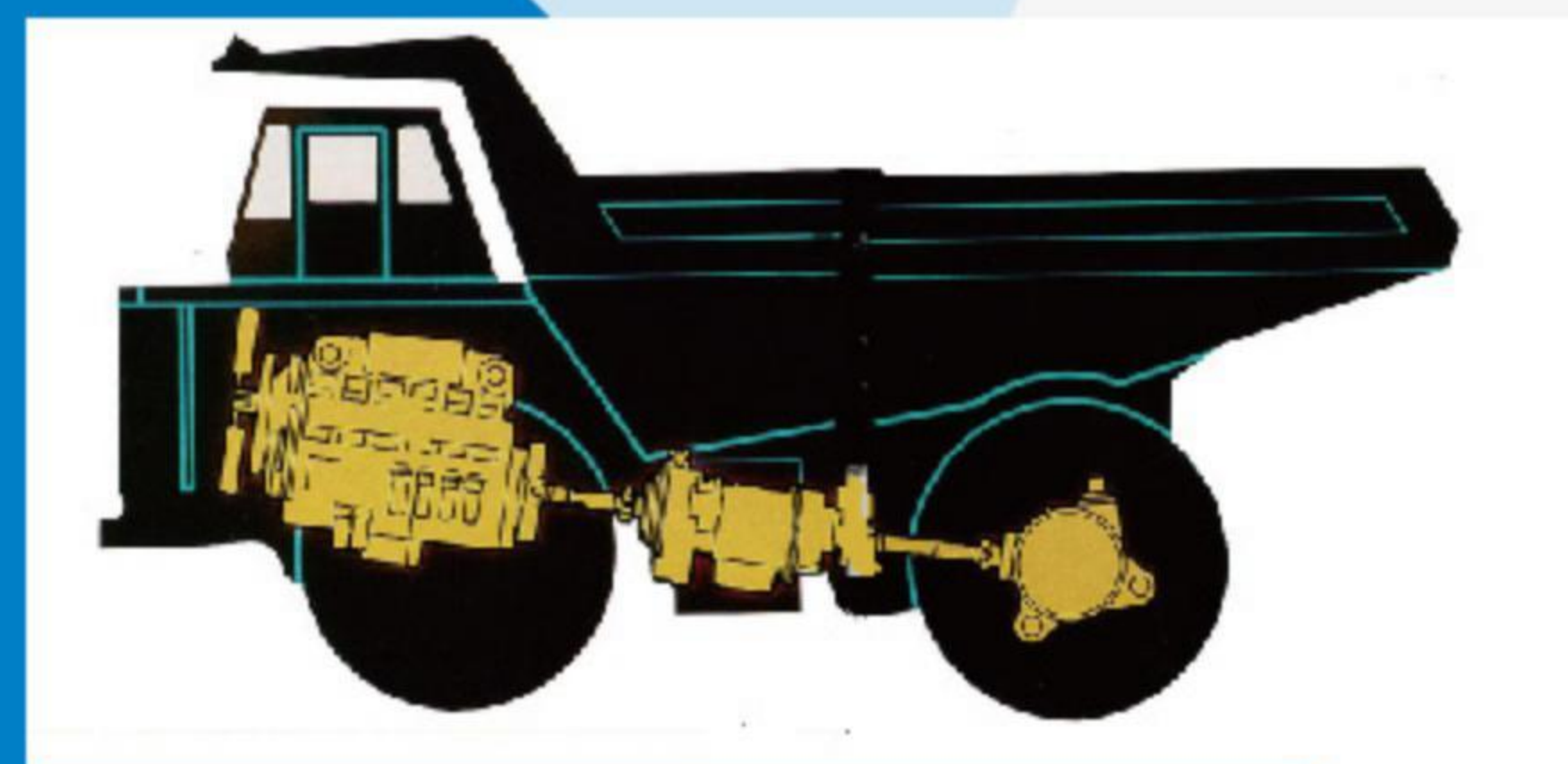
原装进口CUMMINS TIRE2电控柴油发动机。单级涡轮增压，燃油经济性好，动力充沛；发动机监控系统可实时监控各气缸的工作状况，延长发动机使用寿命，降低使用成本；先进的全电控系统，采用双电控模块，保障发动机在不同海拔高度和负载条件下的最佳性能。

The original imported CUMMINS TIRE2 electronically controlled diesel engine. Single-stage turbocharging has good fuel economy and abundant power. Engine monitoring system can monitor the working condition of each cylinder in real time, prolong the service life of the engine and reduce the use cost. Advanced full-electronic control system adopts dual-electronic control module to ensure the best performance of the engine at different altitudes and loads.

● 成熟的动力传动系 Advanced AC Frequency Conversion Electric Drive System

- 动力传动系统提供优异的牵引性能，在坡道和不良路面都能保持极高的生产率。产品的重量、动力、传动比设计达到最优的配比，能在不同的工况下转化为高效的生产率。

The entire drivetrain provides excellent pulling performance and class leading rimpull, resulting in excellent productivity on steep inclines and poor ground conditions. Our machines have the balance between weight, power & gearing that transfers effective productive drive to the wheels on all applications.



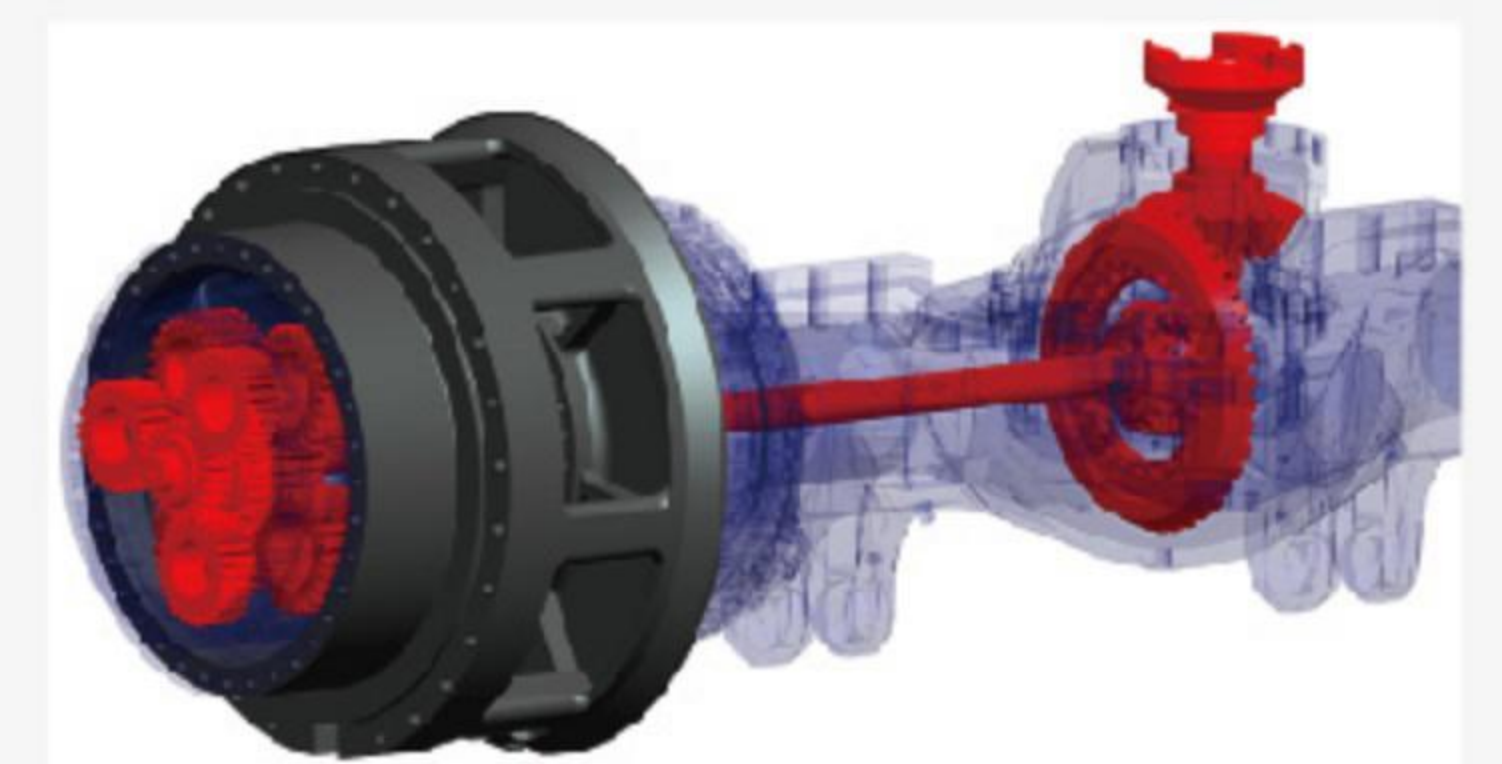
● Allison H8610AR 自动变速箱 Automatic Transmission

- 柔性自动换档。
Flexible automatic shift.
- 液力变扭器、液力缓行器和行星式齿轮变速器，组合一体。
Hydraulic torque converter, hydraulic retarder and planetary gear transmission are integrated.
- 具有液力缓行、空档启动保护、动力/经济模式切换，举升倒档互锁、举升高速控制等功能。
Hydraulic retardation, neutral start protection, power/economic mode switching, lifting reverse interlocking, lifting speed control, etc.
- 在所有前进档位内自动闭锁。
Automatic locking in all forward gears.



● 后桥 Rear Axle

- 全浮式重载后桥，带有一级螺旋伞齿轮主减速器和双级行星式轮边减速器，桥壳由高强度合金钢铸造。
Full floating heavy-duty rear axle with primary helical bevel gear reducer and double planetary wheel edge reducer. The axle housing is cast with high strength alloy steel.
- 主减速比 2.16:1
Main Deceleration Ratio 2.16:1
- 轮边速比 13.75:1
Edge Speed Ratio 13.75:1
- 总速比 29.70:1
Total Speed Ratio 29.70:1



● **装载**
Loading

- 可与多种电铲、液压挖掘机和轮式装载机完美匹配。徐工 XE2000E 液压挖掘机装载 XDR100, 可提供高生产率组合。
It can be perfectly matched with various electric shovels, hydraulic excavators and wheel loaders. XCMG XE2000E hydraulic excavator loads XDR100, providing a high productivity combination.

可靠的制动系统 RELIABLE BRAKE SYSTEM

● **前后桥全湿盘制动系统**
Full Wet Disc Braking System for Front and Rear Bridges

全液压制动控制系统，由变速箱PTO驱动的压力补偿柱塞泵为制动和转向提供动力。前后独立的先导式双回路制动控制系统均装有蓄能器，可提供应急制动。

Full hydraulic braking control system, pressure compensated plunger pump driven by PTO transmission provides power for braking and steering. The independent pilot dual-circuit braking control system is equipped with accumulator, which can provide emergency braking.

- **前制动器：**油冷盘制动器，具备独立散热系统。湿滑路面制动力减半。（可选配干盘制动）

Front Brake: Oil-cooled disc brake with independent heat dissipation system. The braking force on wet and slippery pavement is reduced by half. (optional dry disc brake)

- **后制动器：**油冷盘制动器，具有驻车 and 缓行功能，具备独立散热系统。

Rear brake: oil-cooled disc brake, with parking and braking functions, with an independent heat dissipation system.

行车制动 - 制动踏板控制，前后液压制动回路分别实施。

Driving brake: brake pedal control, front and rear hydraulic brake circuit are implemented separately.

驻车制动 - 液压释放，由弹簧对后制动盘组上的活塞加载实施。

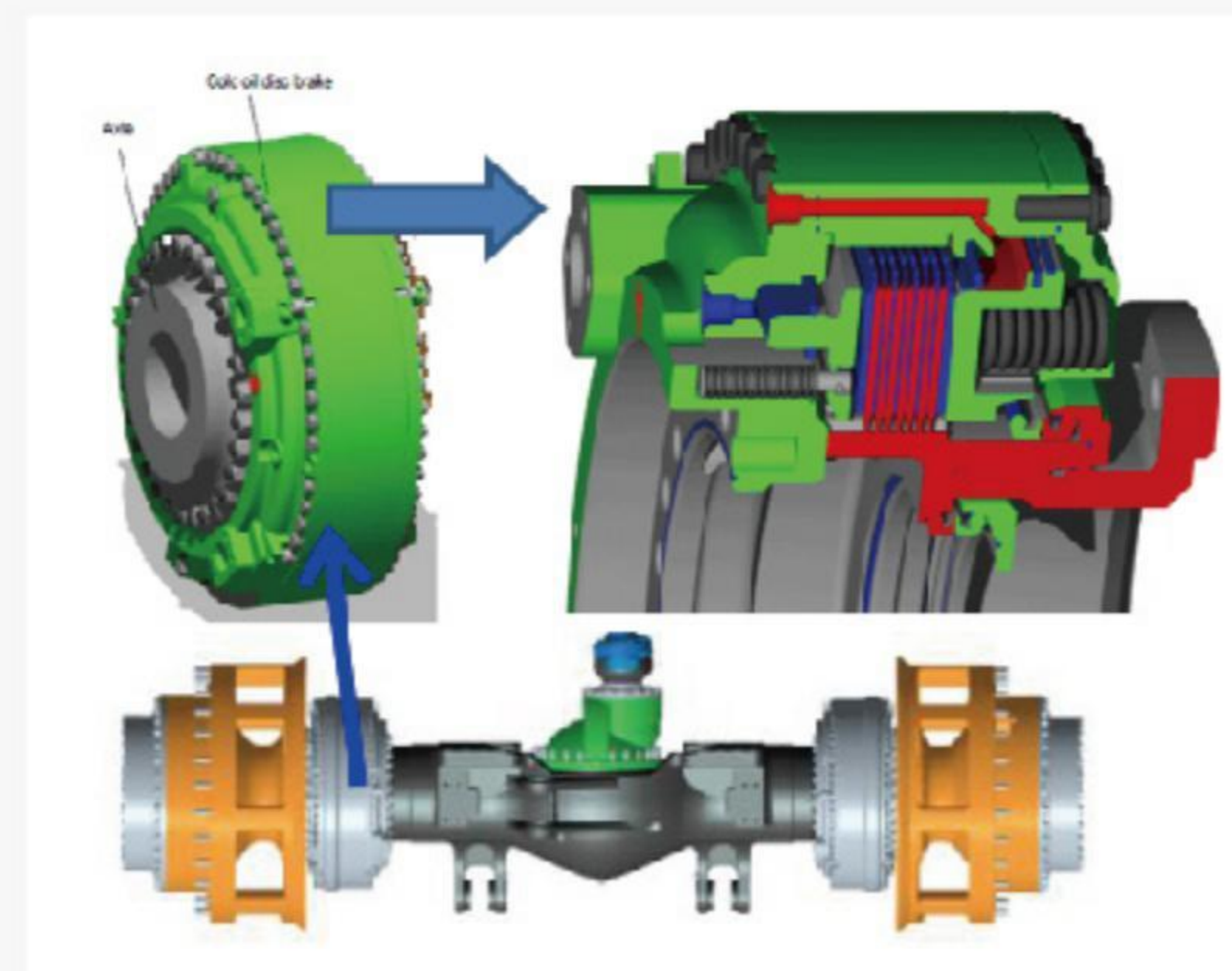
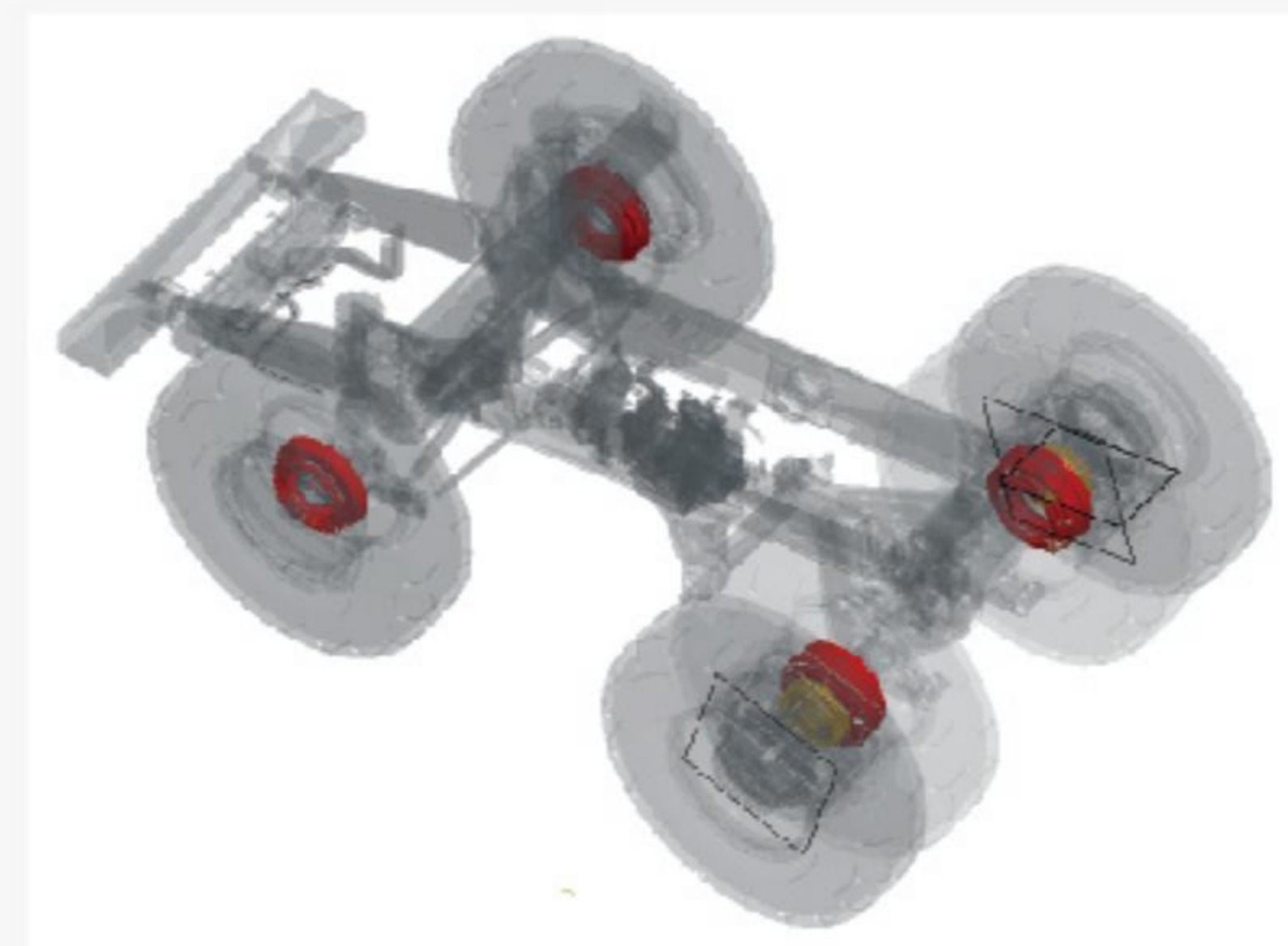
Parking brake: Hydraulic release, loaded by the spring on the piston on the rear brake disc set.

缓行制动 - 通过操纵杆和总线键盘，分别控制后盘制动和变速箱液力缓行器。

Slow braking: The rear disc brake and the hydrodynamic retarder of the gearbox are controlled respectively by the joystick and the bus keyboard.

紧急制动 - 通过电磁阀控制，同时实行驶车和驻车制动。

Emergency braking: solenoid valve control, while the implementation of driving and parking braking.



● **牵引力控制系统-TCS**
Traction Control System TCS

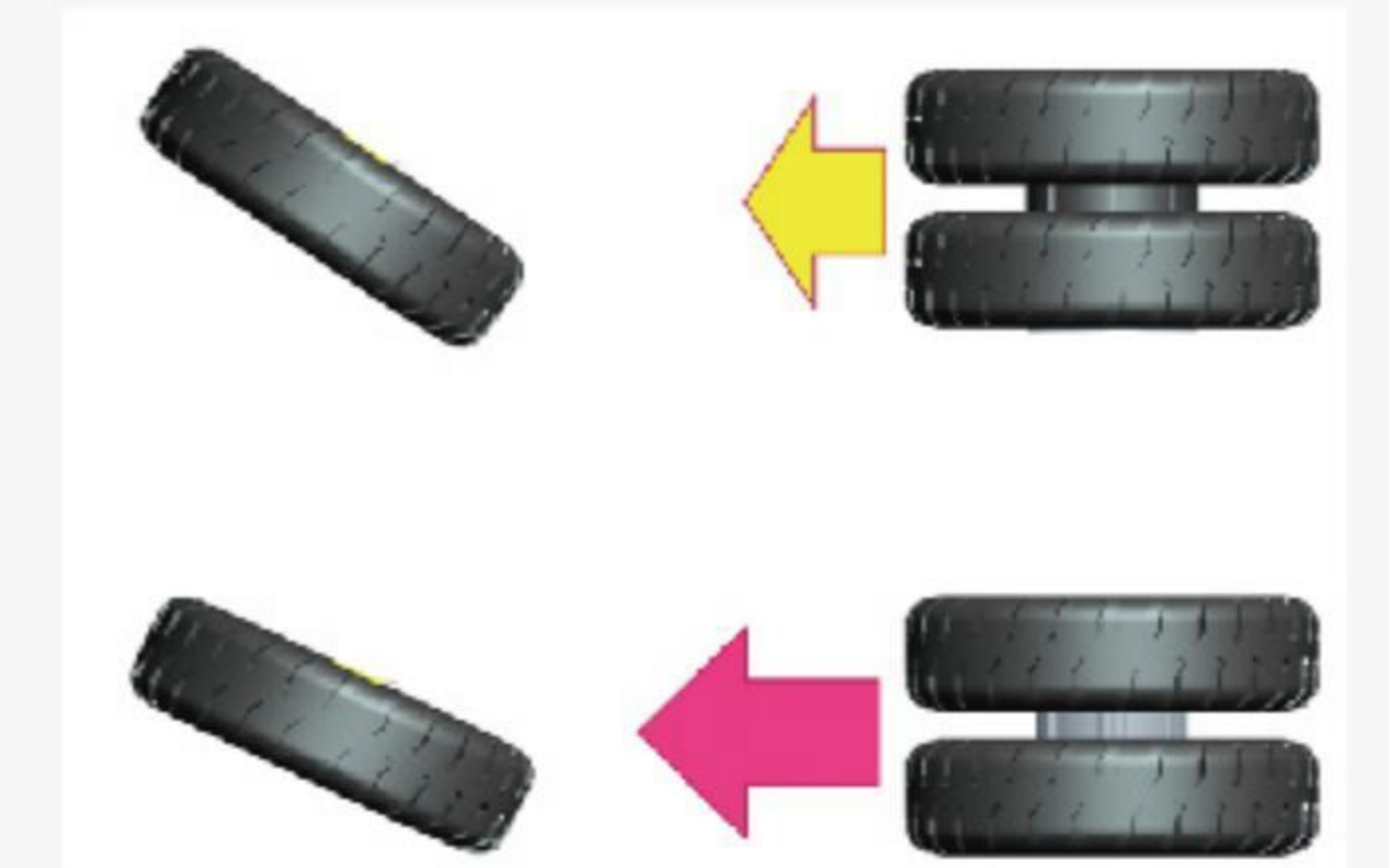
如果后桥的某一边轮胎开始打滑，牵引力控制系统通过调整两后轮的制动力，将扭矩分配到另一边，从而保证设备正常行驶。

If one side of the rear axle starts to slip, The Traction Control System distributes the Torque to the other side by adjusting the braking force on both rear wheels to ensure the normal running of the equipment.

- 在湿滑表面通过自动调节两后轮的制动力，防止单侧轮打滑，实现牵引力控制。
The traction control is realized by automatically adjusting the braking power of the two rear wheels on the wet and slippery surface to prevent the skidding of one side wheels.

- 极好的机动性。
Excellent mobility.

- 延长了轮胎的使用寿命。
Extend the service life of tyres.



● **液压自动缓速控制-ARC**
Hydraulic Automatic Reduction Control ARC

- 实现下坡速度稳定可控
Achieving Steady and Controllable Downhill Velocity
- 防止刹车系统过热及发动机超速
Preventing Overheating of Brake System and Overspeed of Engine
- 驾驶员更易操作，减少干扰
Drivers are easier to operate and reduce interference

驾驶舒适 OPERATE IN COMFORT

● 人机工程学设计驾驶室 Ergonomics Design Cab

● 视野开阔 Excellent visibility

- 空间宽敞，视野开阔。
The frame adopts a box girder.

● 舒适的座椅 Comfortable seat

- 座椅为可调气悬浮式减振高靠背座椅，配备副驾驶座椅。
The seat is adjustable high gas suspension damping adjusters, equipped with the co-pilot seat.



XDR100 DOUBLE AXLE RIGID DUMP TRUCK

● 内饰配备齐全 Complete interior

- 各种显示仪表、报警器、照明、控制开关、收音机、车载电脑、电动车窗、可倾斜伸缩式方向盘、电动风档雨刷及清洗器、着色玻璃、冷暖空调等配备齐全。
The fully-equipped cab provided all kinds of display instrument, alarm, lighting, control switch, On-board computer, electric Windows, tilting and telescoping steering wheel, electric windshield wiper cleaners, colored glass, air conditioning.

● 车辆监测系统 Vehicle monitor system

- 车辆运行数据及故障报警项目采用液晶显示器和可控仪表配合的显示方式。大尺寸彩色显示屏，界面切换简单，直观清晰，易于理解。
Vehicle running data and fault alarm project adopts touch LCD display and control instrument display mode. A large color monitor improves availability and allows easy navigation between different screens.

XDR100双桥刚性矿车

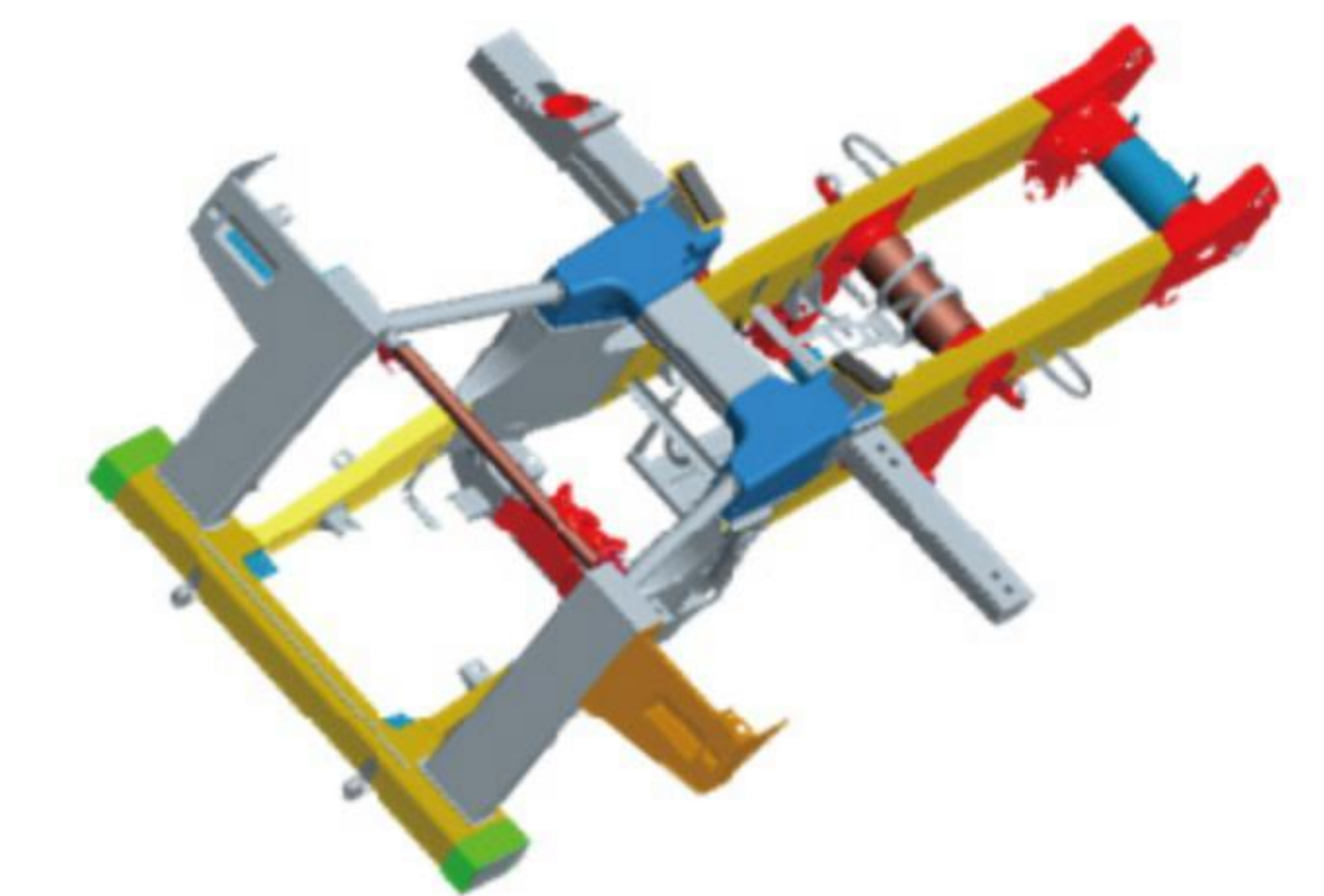


行驶平稳 SMOOTH AND STEADY

● 车架 Vehicle Frame

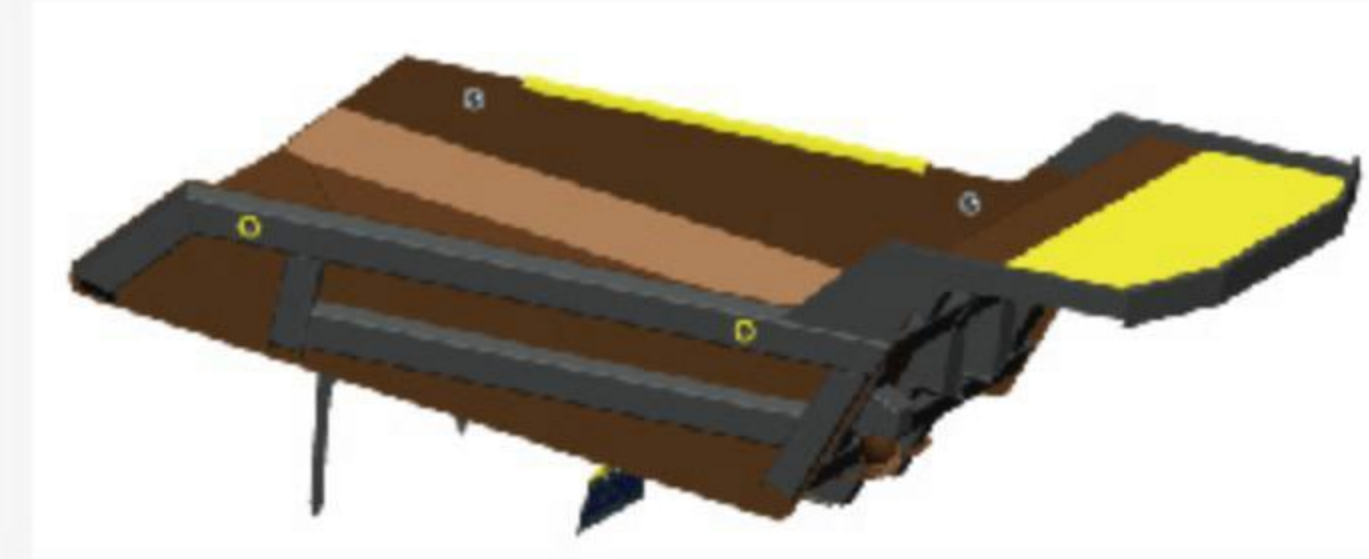
- 车架采用箱形结构纵梁和圈梁，在高承载区域使用优质合金钢铸件，适应载荷多变的恶劣作业工况；利用CAE软件对车架的强度、刚度及疲劳失效进行分析并优化，保证在提高强度和刚度的情况下尽量减重，以提高整车工作效率。按照澳标AS1554制造，重要焊缝100%经超声波探伤，保证焊接质量。

The frame adopts a box girder and ring beam structure, with cast steel components used in the stress concentration area to adapt to the adverse working conditions with the load frequently changing; the CAE software is adopted for analysis and optimization of the frame strength, stiffness and fatigue failure to minimize the weight under the condition that higher strength and stiffness can be guaranteed, so that the working efficiency of the complete vehicle could be improved as far as possible. All important welds (100%) have passed ultrasonic testing.



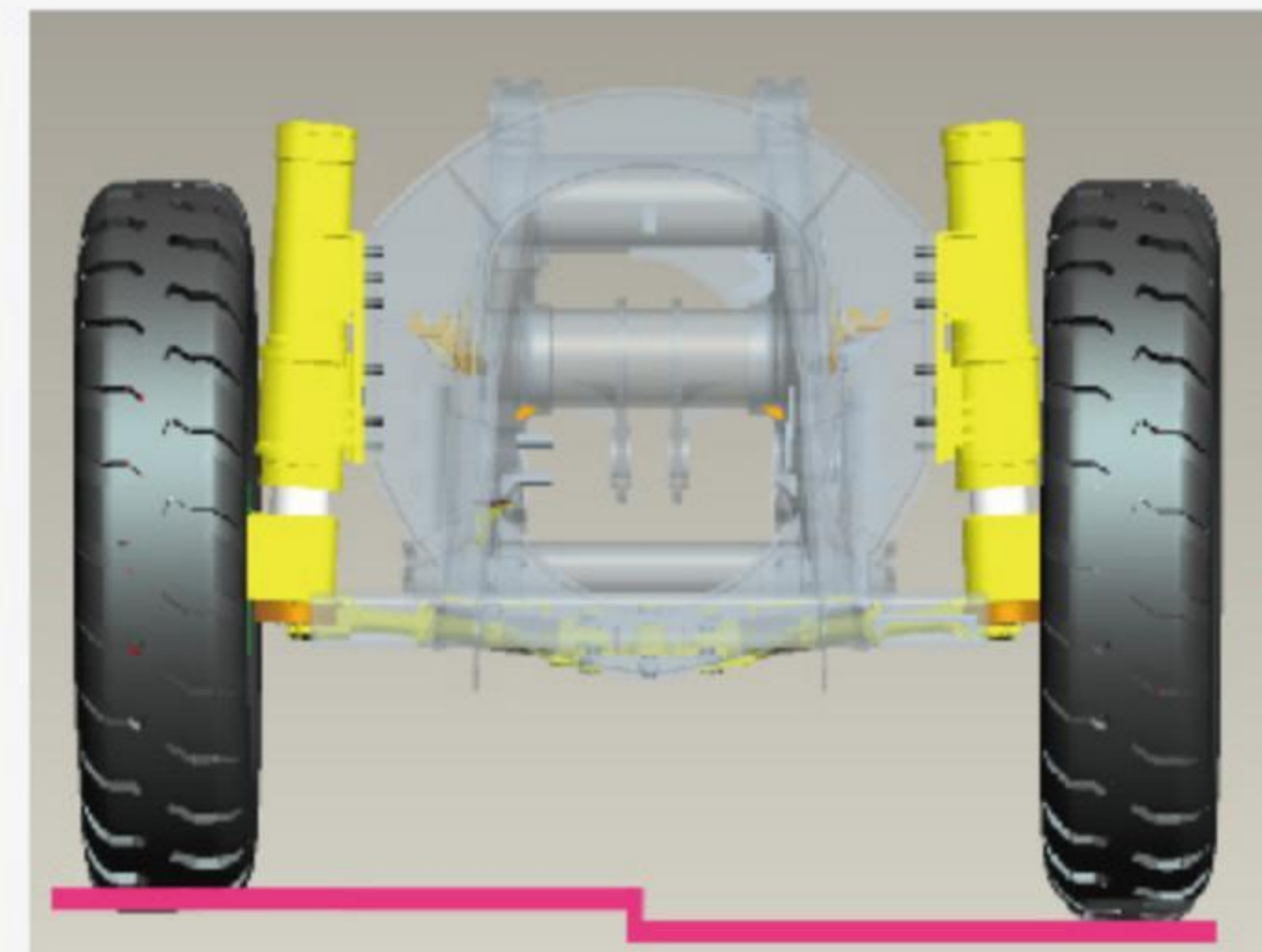
● 货厢 Body

- 货厢采用高强合金钢板焊接，选配高强度耐磨衬板。
The cargo compartment is welded with high strength alloy steel plates and selected with high strength wear resistant lining.



● 悬架系统 Suspension

- 采用4个油气比可变的氮气/油缸，减缓运输路面和装载带来的冲击，延长车架寿命。
Four nitrogen/cylinders with variable oil/gas ratio are adopted to alleviate the impact of road surface and loading and prolong the service life of frame.

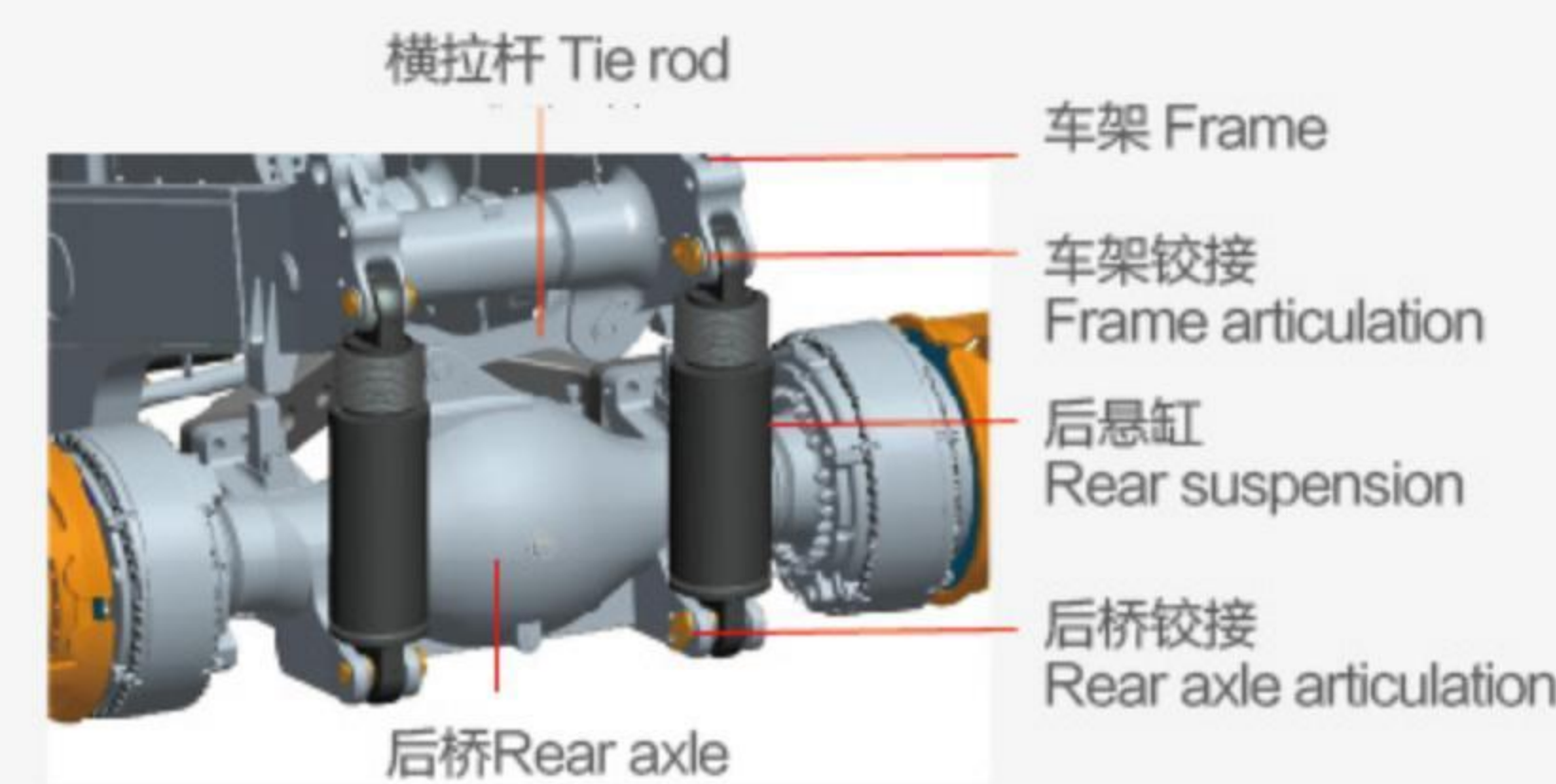


- 前悬架采用变刚度独立烛式悬架，左右对称，保证车轮定位可靠，行驶稳定舒适。能够适应承载和路面状况的变化，快速吸收冲击，衰减振动，保证行驶平顺。
The front suspension uses the variable rigidity independent candle suspension, the left and right symmetry, guarantees the wheel fixed position reliable, the movement is stable and comfortable. It can adapt to the change of load and road condition, quickly absorb impact, attenuate vibration and ensure smooth running.

The front suspension uses the variable rigidity independent candle suspension, the left and right symmetry, guarantees the wheel fixed position reliable, the movement is stable and comfortable. It can adapt to the change of load and road condition, quickly absorb impact, attenuate vibration and ensure smooth running.

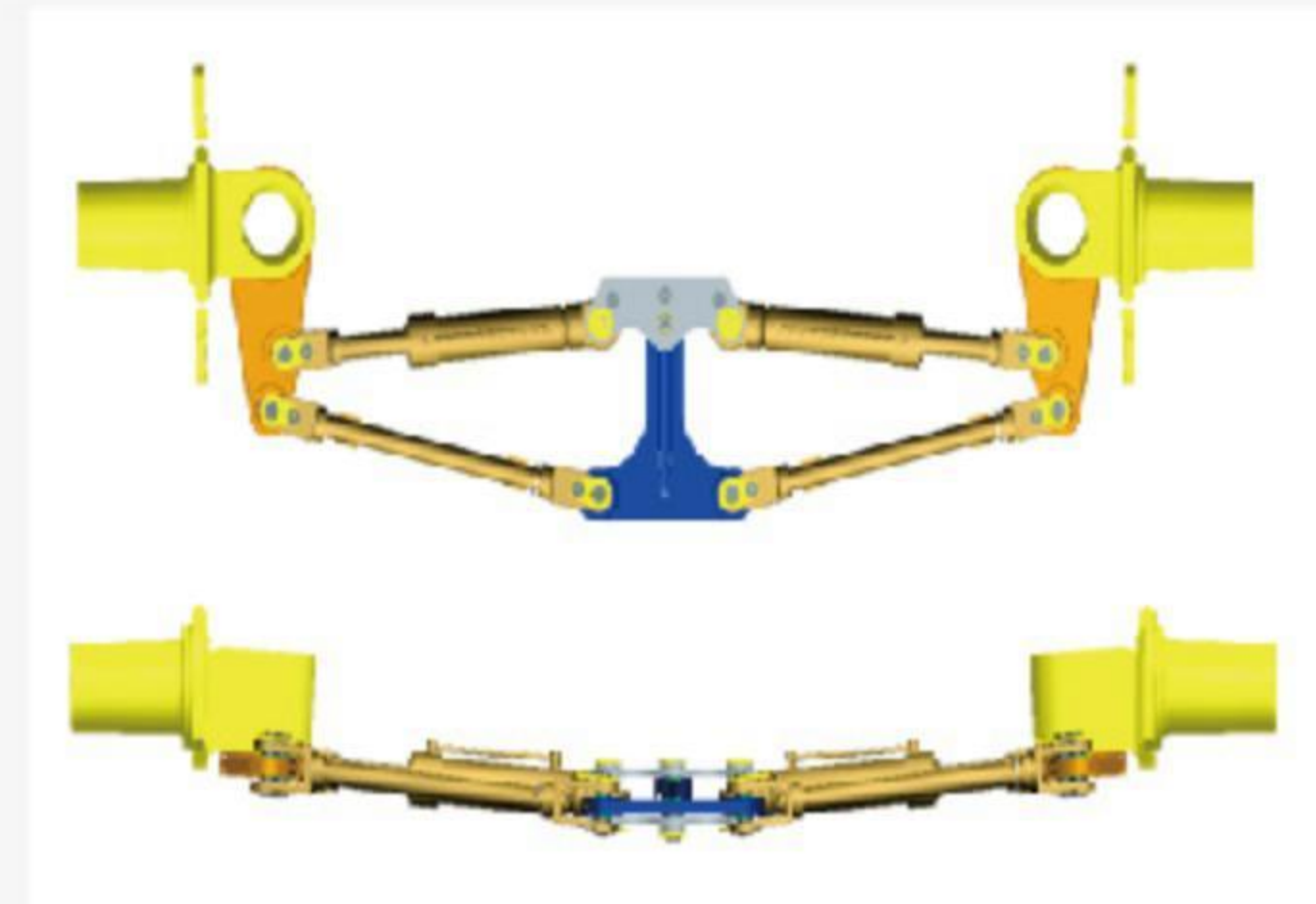
- 后悬架采用纵向三角摆臂式悬架，允许后桥壳摆动，有效吸收恶劣路面产生的弯曲和扭曲应力。
The rear suspension adopts a longitudinal triangular pendulum suspension, allowing the rear axle shell to swing, effectively absorbing the bending and distortion stress generated by the bad road surface.

The rear suspension adopts a longitudinal triangular pendulum suspension, allowing the rear axle shell to swing, effectively absorbing the bending and distortion stress generated by the bad road surface.



● 转向 Steering

- 双连杆设计保证转向尺寸最佳，具有更高的转向精度，减小轮胎的磨损，延长轮胎使用寿命。
Two tie-rod design enables the steering with best size and higher steering precision and minimal steering error to prolong the service life of tire.



- 转弯半径小，整车稳定性好，胜任恶劣的作业工况。
It features a small turning radius and good vehicle stability, competent for poor working conditions.

It features a small turning radius and good vehicle stability, competent for poor working conditions.

维护方便 EASY MAINTENANCE

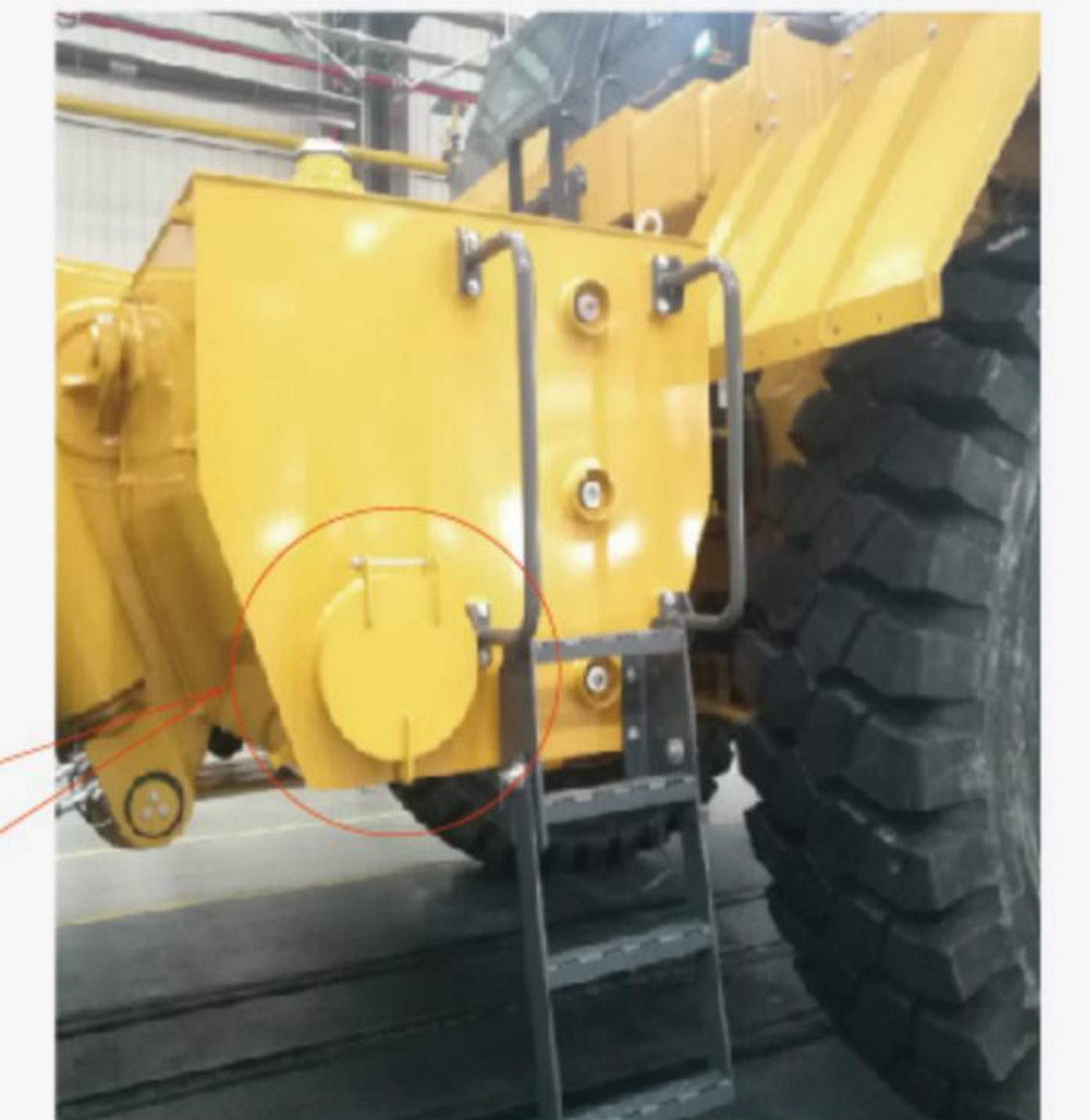
● 自动润滑系统 Automatic lubrication system

- 自动润滑系统定期润滑各部件，减少保养时间，降低维修成本。
Controlled amount of lubricant is delivered timely to lube points, reducing service time and costs.



● 快速加油系统 Rapid refueling system

- 分布在车架两侧的燃油快速加注口，接近地面，易于操作。
The fuel injection port distributed on both sides of the frame is close to the ground and easy to operate.



● 随机备件及工具 Carried spares and tools

- 配备一套随机工具和易损件。
Equiped a set of carried tools and wearing parts.

安全

SAFETY DESIGN

徐工矿用自卸车安全性满足国际CE、AS最高标准。采用ROPS/FOPS驾驶室，满载重心后移，提升重载下坡安全性。制动可靠、迅捷，紧急制动可提供最大制动力，制动距离只有ISO3450标准的80-85%。排气管远离油管，消除火灾隐患。标配后视镜、摄像头减少视野盲区，标配倒车警告和倒车摄像头。LED灯照的亮度是普通灯的2.5倍。标配车下紧急停机按钮。失去动力后，蓄能器保证前轮完全转向。举升倒档抑制、前进限档功能。

XCMG mine dump truck safety meets the highest international CE and AS standards. The ROPS/FOPS cab is used to shift the center of gravity behind the full load to improve the safety of heavy load downhill. Braking is reliable and fast. Emergency braking can provide maximum braking force. The braking distance is only 80-85% of ISO3450 standard. The exhaust pipeline is far away from the oil pipeline, eliminating fire hazards. Standardized rearview mirrors and cameras reduce visual blind areas, and standard reversing warning and reversing cameras. The brightness of LED lamp is 2.5 times that of ordinary lamp. Standard emergency stop button under the car. After losing power, the accumulator ensures that the front wheel turns completely. Lifting reverse restraint, forward limit function.

- 在结构设计上，合理布置驾驶室位置和整车前后悬长度，保证驾驶员不会因追尾而受伤。
In structural design, the cab position and the front and rear suspension lengths of the whole vehicle are reasonably arranged to ensure that the driver will not be injured by rear-end collision.
- 配备全景行车辅助视频系统，实时获取周边视频影像，保证行车安全。
Equipped with panoramic driving assistant video system, real-time acquisition of peripheral video images to ensure driving safety.
- 配置主动防撞系统，自动探测前方危险情况和障碍物，及时预警并施加制动，从而有效的保护司乘人员的安全。
Equipped with active collision avoidance system, automatic detection of dangerous situations and obstacles ahead, timely warning and braking, thus effectively protecting the safety of the Division's crew.



选配

OPTIONAL

● 称重系统 (选配) Weighing system (optional)

- 该系统可以自动记录装载重量、装载进度等数据，帮助用户对设备产量进行准确监控。
This system can automatically record the loading weight, loading progress and other relevant data to help users accurately monitor equipment production.
- 矿车两侧安装装载进度指示灯，绿灯（50%），黄灯（90%），红灯（105%）。指示灯可以帮助铲装司机控制每次的装载量，避免矿车超载运行。
Each tramcar is equipped with a green light (50%), a yellow light (90%) and a red light (105%) on both sides to indicate the loading progress and help the driver to control the loading capacity every time to avoid overload operation of the tramcar.
- 称重系统显示屏位于驾驶室内，以数字形式和简单的英文单词显示装载数据。装载数据被记录在数据库中并可以读取。
The weighing system display in the car can show the loading data in the form of figures and simple English words. The loading data is recorded in the database and can be read.

● 集中灭火系统 (选配) Central fire extinguishing system (optional)

- 选用国际知名品牌的车载式半自动集中灭火系统，用于保护发动机、液压泵、高压滤芯、发电机、牵引电机、液压阀组、液压油箱出口胶管集中部位等重要设备。
An internationally famous semi-automatic fire extinguishing system is provided to protect the engine, hydraulic pump, high pressure filter, generator, traction motor, hydraulic block, hydraulic oil tank discharge hose and other important equipment.
- 两个启动器按钮分别位于驾驶室内（1个）和车架前保险杠上（1个），人工启动灭火系统。
The two starter buttons located respectively in the cab (1) and on the frame front bumper (1) can help you start the fire extinguishing system manually.